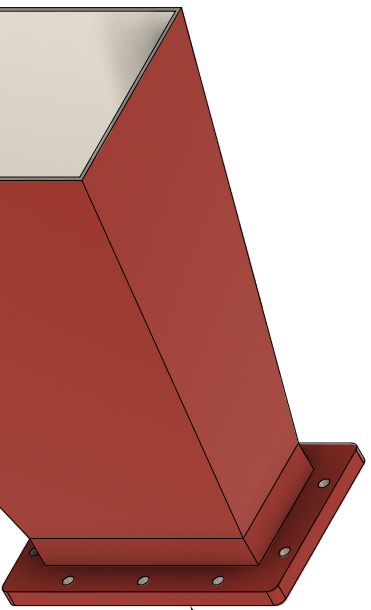
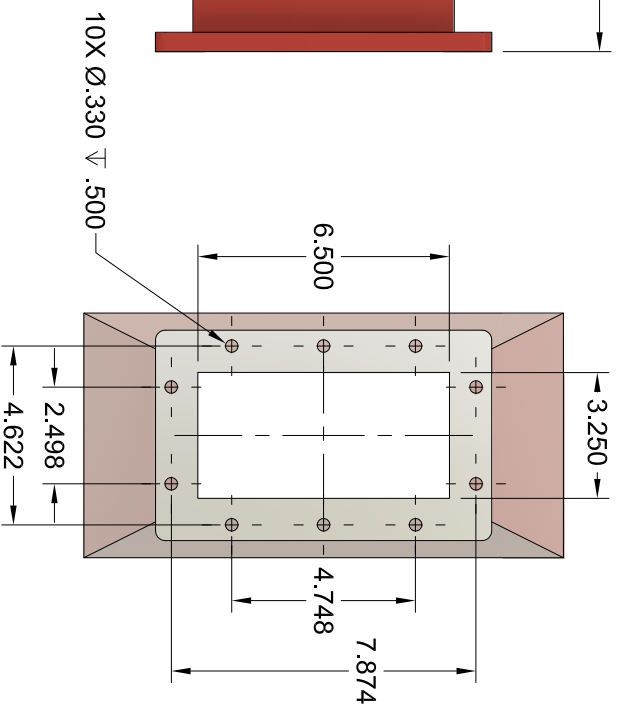
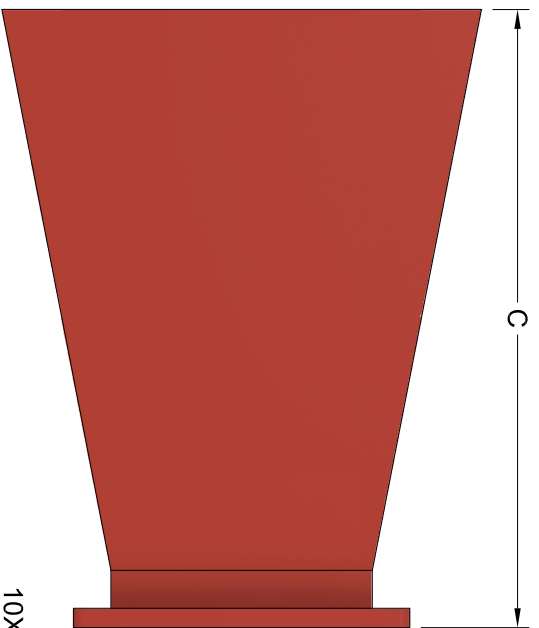
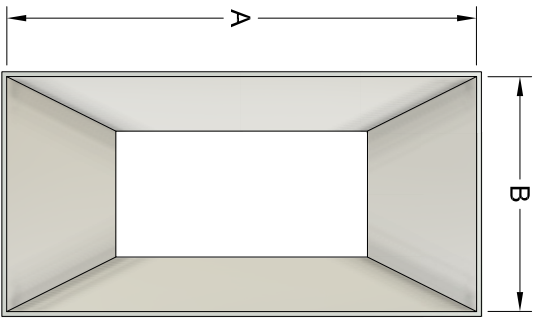


REVISION HISTORY

REV	DESCRIPTION	DATE	APPROVED
A	INITIAL RELEASE	1/23/2025	DA



WR650 CPRF FLANGE

WR650 10dB GAIN HORN ANTENNA							
WG SIZE	FREQ. (GHz)	GAIN (dB)	3dB Beam Width (E-Plane)	3dB Beam Width (H-Plane)	Dim. A (in)	Dim. B (in)	Dim. C (in)
650	1.12-1.70	10	65.1°	45.6°	12.14	6.07	15.98

THIRD ANGLE PROJECTION:

APPROVALS

DATE

UNLESS OTHERWISE NOTED, DIMENSIONS ARE IN INCHES, TOLERANCES ARE:
FRACTIONS: ±1/64 ANGLES: ±1/2°
MACHINED FINISH: 63 OR BETTER

DRAWN: Dirk Aubram
CHKD.:
APRVD.:

DATE: 1/23/25



DECIMALS
2 PLACE
±.01

3 PLACE
±.003

ALUMINUM 6061
TREATMENT: CHEMFILM
FINISH: PAINT, RED

WR650 10DB GAIN HORN OUTLINE DRAWING



THE INFORMATION IN THIS DRAWING IS PROPRIETARY AND SHALL NOT BE REPRODUCED OR TRANSMITTED IN ANY FORM OR BY ANY MEANS WITHOUT THE WRITTEN CONSENT OF IMPULSE TECHNOLOGIES, INC.

SIZE: 6CDA9
SCALE: 1:5
PACKAGE CODE: ITT
DRAWING#: OTL-650-10-IT1
MODEL#: SGH650-10-IT1
REVISION: A
SHEET: 1/1