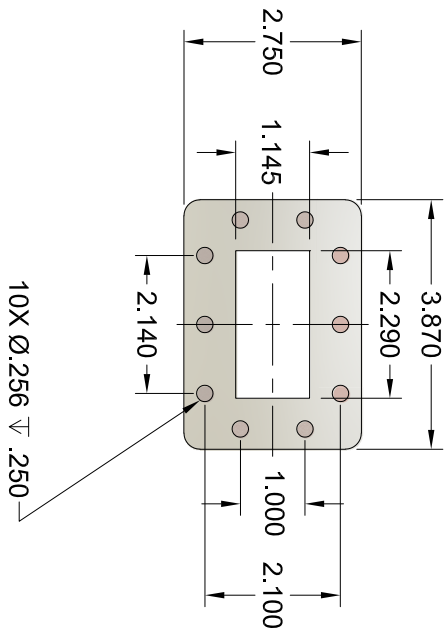
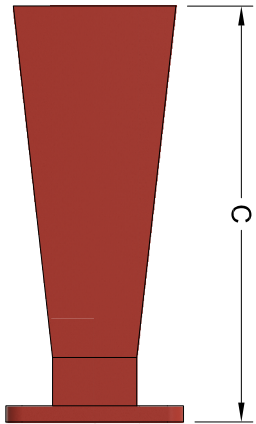
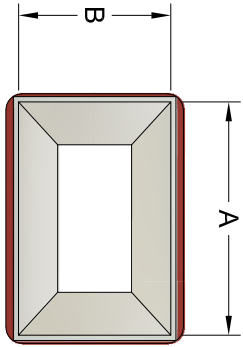
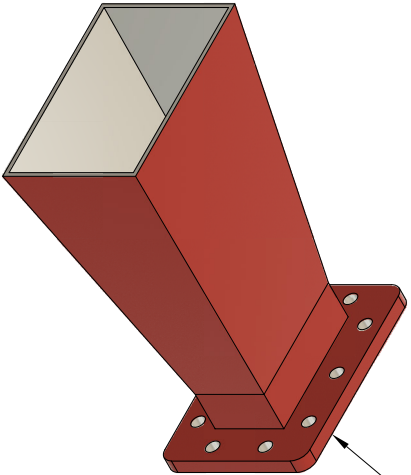


REVISION HISTORY

REV	DESCRIPTION	DATE	APPROVED
A	INITIAL RELEASE	10/7/2024	DA



WR229 CPRF FLANGE



WR229 10dB STANDARD GAIN HORN ANTENNA							
WG SIZE	FREQ. (GHz)	GAIN (dB)	3dB Beam Width (E-Plane)	3dB Beam Width (H-Plane)	Dim. A (in)	Dim. B (in)	Dim. C (in)
WR229	3.3-4.9	10	58.6°	51.9°	3.62	2.36	6.45

THIRD ANGLE PROJECTION:

APPROVALS

DATE

UNLESS OTHERWISE NOTED, DIMENSIONS ARE IN INCHES, TOLERANCES ARE:

DRAWN: Dirk Audram
CHKD.:
APRVD.:

DATE: 10/7/2024

FRACTIONS: ±1/64 ANGLES: ±1/2° MACHINED FINISH: 63 OR BETTER

MATERIAL: ALUMINUM 6061

SIZE: 6CDA9
SCALE: 1:3



DECIMALS	2 PLACE	3 PLACE	FINISH	PAINT, RED	MODEL#	SGH229-10-ITI	REVISION
±.01	±.003						A
							SHEET
							1/1



WR229 10dB Horn Antenna

THE INFORMATION IN THIS DRAWING IS PROPRIETARY AND SHALL NOT BE USED OR REPRODUCED IN ANY MANNER WITHOUT WRITTEN CONSENT OF IMPULSE TECHNOLOGIES, INC.