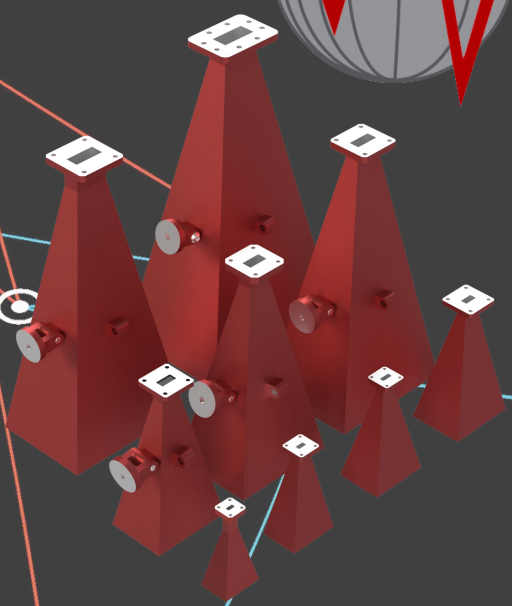


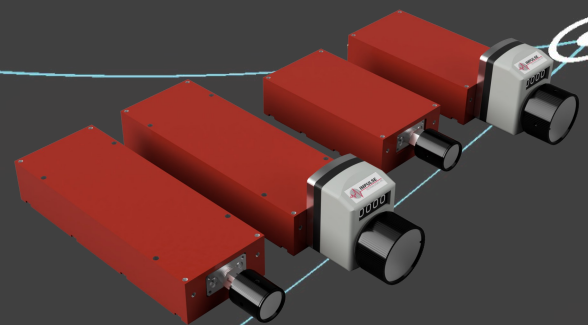
IMPULSE

TECHNOLOGIES INC.

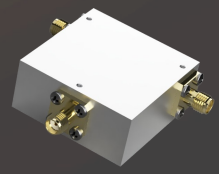
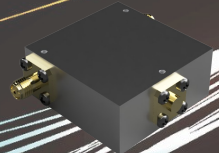
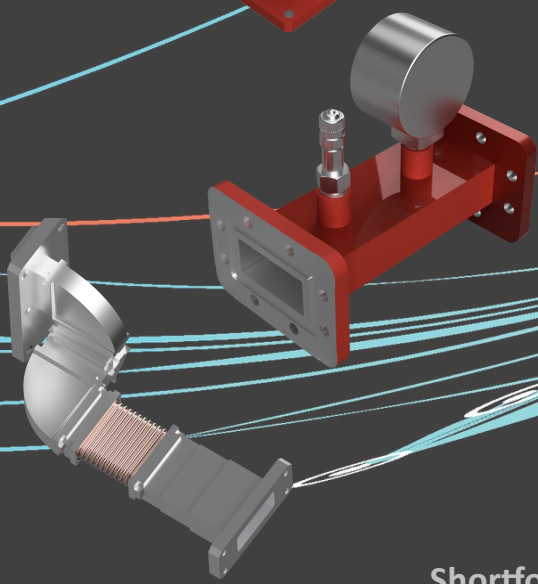
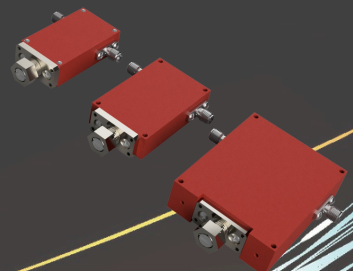
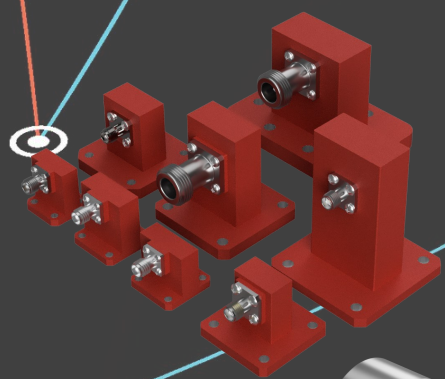
AN INTERNATIONAL COMPANY



Waveguide Components



Coax Components



Shortform Catalog



PHASE SHIFTERS



Manual Coaxial Phase Shifters

Impulse Technologies manufactures a wide variety of Phase Shifters to meet your design specifications. Two different models are available, a Standard Model requiring mechanical adjustment with a screwdriver/lock nut and a Digital Counting Dial model.

Phase Shifter models are: Min. Adjustable Phase Shift 0-30°/GHz - P375xx series

Min. Adjustable Phase Shift 0-60°/GHz - P550xx series

30° PHASE SHIFTERS - 3.75" size					
Standard Model No.	Digital Dial Model No.	Freq (GHz)	Min. Phase Adjust	I.L. dB max	VSWR max
P37503-ITI	P37503D-ITI	DC - 2.3	0 - 30°/GHz	0.5	1.5
P37504-ITI	P37504D-ITI	DC - 4.3	0 - 30°/GHz	0.5	1.5
P37505-ITI	P37505D-ITI	DC - 8.2	0 - 30°/GHz	0.6	1.5
P37506-ITI	P37506D-ITI	DC - 12.7	0 - 30°/GHz	0.7	1.5
P37507-ITI	P37507D-ITI	DC - 18.6	0 - 30°/GHz	1	1.6
P37508-ITI	P37508D-ITI	DC - 26.5	0 - 30°/GHz	1.5	2
P37508-360-ITI	P37508D-360-ITI	18.0 - 26.5	0° - 360°	1.5	1.8
P37509-360-ITI	P37509D-360-ITI	18.0 - 40.0	0° - 360°	2.5	2
60° PHASE SHIFTERS - 5.50" size					
Standard Model No.	Digital Dial Model No.	Freq (GHz)	Min. Phase Adjust	I.L. dB max	VSWR max
P55003-ITI	P55003D-ITI	DC - 2.3	0 - 60°/GHz	0.5	1.5
P55004-ITI	P55004D-ITI	DC - 4.3	0 - 60°/GHz	0.5	1.5
P55005-ITI	P55005D-ITI	DC - 8.2	0 - 60°/GHz	0.6	1.5
P55006-ITI	P55006D-ITI	DC - 12.7	0 - 60°/GHz	0.7	1.5
P55007-ITI	P55007D-ITI	DC - 18.6	0 - 60°/GHz	1	1.6
P55008-ITI	P55008D-ITI	18.0 - 26.0	0 - 60°/GHz	1.5	2

General Specifications:

RF Power: 100W average, 3kW peak

RF Connectors: SMA F

Connectors: Stainless Steel

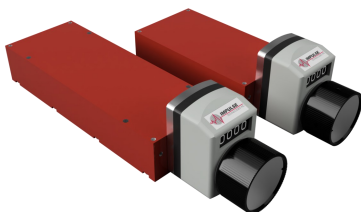
Size: 3.75" x 2.0" x 1.0" (P375xx series)
5.50" x 2.0" x 1.0" (P550xx series)

Body: Aluminum

Control: 0.25" dia. multi-turn non-translating shaft, with approx. 10 turns (P375xx) or 18 turns (P550xx) from min to max phase adjust

Operational Temperature: 0°C to +40°C

Impulse Technologies products meet or exceed the requirements of Mil-E-5400 and MIL-E-16400.



Digital Dial Models



Standard Models

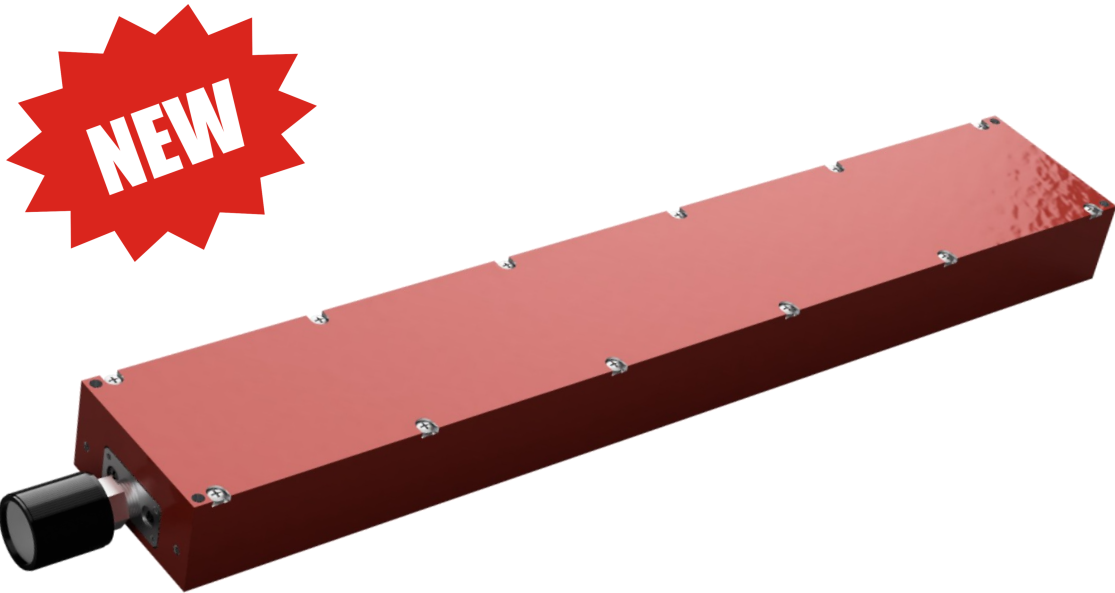
1989 Union Blvd., Bay Shore, NY 11706 Phone: 631-968-4116 Fax: 631-968-8339

Email: sales@impulse-tech.com Website: www.impulse-tech.com

PHASE SHIFTERS



180deg Phase shifter



180° PHASE SHIFTERS - 12.0" size					
Standard Model No.	Digital Dial Model No.	Freq (GHz)	Min. Phase Adjust	I.L. dB max	VSWR max
P12003-ITI	P12003D-ITI	DC - 2.3	0 - 180°/GHz	0.6	1.3
P12004-ITI	P12004D-ITI	DC - 4.3	0 - 180°/GHz	0.7	1.5

General Specifications:

RF Power: 100W average, 3kW peak

RF Connectors: SMA F

Min. Adj. Phase Shift: 0 to 180°/GHz

Insertion Phase @ 1GHz: 760° (min. setting)

Connectors: Stainless Steel

Size: 12.0" x 2.0" x 1.0"

Body: Aluminum

Control: 0.25" dia. multi-turn non-translating shaft

Operational Temperature: 0°C to +40°C

Impulse Technologies products meet or exceed the requirements of Mil-E-5400 and MIL-E-16400.

1989 Union Blvd., Bay Shore, NY 11706 Phone: **631-968-4116** Fax: **631-968-8339**

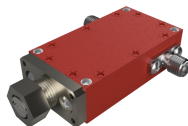
Email: sales@impulse-tech.com Website: www.impulse-tech.com

CONTINUOUSLY VARIABLE ATTENUATORS



Continuously Variable Attenuators

AF/AV06 Series

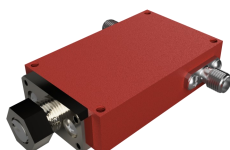


FREQUENCY FLAT MODELS				
Freq. (GHz)	Atten. Range (dB)	VSWR Max	Flatness (+/- dB)	Model No.
2.0-4.0	10	1.6	1.5	AF064-10-ITI
3.6-6.5	10	1.5	0.8	AF065C-10-ITI
3.6-4.3	20	1.5	0.5	AF065C1-20-ITI
5.8-6.5	20	1.5	0.5	AF065C2-20-ITI
4.0-8.0	10	1.5	2.0	AF065-10-ITI
7.2-8.4	20	1.5	1.0	AF065X-20-ITI
8.0-12.4	10	1.5	1.0	AF066-10-ITI
10.7-12.7	20	1.5	0.8	AF066X-20-ITI
10.7-14.5	20	1.5	1.5	AF066K-20-ITI
13.0-14.5	30	1.5	0.5	AF067K-30-ITI
12.4-18.0	10	1.5	1.0	AF067-10-ITI
17.0-18.6	20	1.5	1.0	AF067J-20-ITI
8.0-18.0	20	1.7	1.8	AF066H-20-ITI
14.0-26.0	20	1.7	1.0	AF068-20-ITI

LEVEL ADJUST MODELS				
Freq. (GHz)	Atten. Range (dB)	VSWR Max	Flatness (+/- dB)	Model No.
2.0-4.2	10	1.5	N/A	AV064-10-ITI
3.7-8.0	20	1.5	N/A	AV065-20-ITI
7.9-12.7	30	1.5	N/A	AV066-30-ITI
11.7-18.0	30	1.5	N/A	AV067-30-ITI
14.0-26.5	20	1.7	N/A	AV068-20-ITI

MULTIBAND MODELS				
Freq. (GHz)	Atten. Range (dB)	VSWR Max	Flatness (+/- dB)	Model No.
2.0-8.0	10	1.5	N/A	AV064F-10-ITI
4.0-12.4	20	1.5	N/A	AV065G-20-ITI
4.0-18.0	10	1.5	N/A	AV065H-10-ITI
6.0-18.0	30	1.5	N/A	AV066H-30-ITI

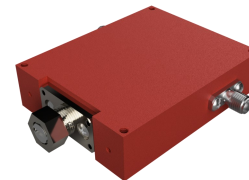
AF/AV07 Series



FREQUENCY FLAT MODELS				
Freq. (GHz)	Atten. Range (dB)	VSWR Max	Flatness (+/- dB)	Model No.
2.0-4.0	10	1.7	1.5	AF074-10-ITI
3.6-6.5	20	1.5	1.3	AF075C-20-ITI
3.6-4.3	20	1.5	0.5	AF075C1-20-ITI
5.8-6.5	20	1.5	0.5	AF075C2-20-ITI
4.0-8.0	10	1.5	2.0	AF075-10-ITI
7.2-8.4	20	1.5	1.0	AF075X-20-ITI
8.0-12.4	10	1.5	1.0	AF076-10-ITI
10.7-12.75	20	1.5	0.8	AF076X-20-ITI
10.7-14.5	20	1.5	1.5	AF076K-20-ITI
12.4-18.0	10	1.5	1.0	AF077-10-ITI
17.0-18.6	20	1.5	1.0	AF077J-20-ITI
8.0-18.0	20	1.6	2.0	AF076H-20-ITI

LEVEL ADJUST MODELS				
Freq. (GHz)	Atten. Range (dB)	VSWR Max	Flatness (+/- dB)	Model No.
1.0-2.0	10	1.8	N/A	AV073-10-ITI
2.0-4.0	20	1.5	N/A	AV074-20-ITI
2.0-8.0	20	1.5	N/A	AV074F-20-ITI
4.0-8.0	30	1.5	N/A	AV075-30-ITI
4.0-12.4	30	1.5	N/A	AV075G-30-ITI
8.0-12.4	40	1.5	N/A	AV076-40-ITI
8.0-18.0	40	1.5	N/A	AV076H-40-ITI

AF/AV08 Series



FREQUENCY FLAT MODELS				
Freq. (GHz)	Atten. Range (dB)	VSWR Max	Flatness (+/- dB)	Model No.
0.8-1.0	15	1.8	1.5	AF082L1-15-ITI
0.95-1.45	15	1.8	1.7	AF083L1-15-ITI
1.5-2.0	20	1.5	1.5	AF083L2-20-ITI
2.0-4.0	20	1.5	1.5	AF084-20-ITI
2.8-6.5	20	1.5	1.5	AF084F-20-ITI
3.4-4.2	20	1.5	1.0	AF085C3-20-ITI
3.6-6.5	30	1.5	1.25	AF085C-30-ITI
5.8-6.5	30	1.5	0.75	AF085C2-30-ITI
4.0-8.0	20	1.5	1.0	AF085-20-ITI
7.2-8.4	30	1.5	0.75	AF085X-30-ITI
8.0-12.4	20	1.5	1.0	AF086-20-ITI
10.7-12.7	30	1.5	1.0	AF086X-30-ITI
10.7-14.5	30	1.5	1.5	AF086K-30-ITI
12.4-18.0	20	1.5	1.5	AF087-20-ITI

LEVEL ADJUST MODELS				
Freq. (GHz)	Atten. Range (dB)	VSWR Max	Flatness (+/- dB)	Model No.
0.7-1.0	10	1.7	N/A	AV082-10-ITI
0.8-2.0	20	1.7	N/A	AV083L-20-ITI
1.0-2.0	20	1.5	N/A	AV083-20-ITI
2.0-4.2	20	1.5	N/A	AV084-20-ITI
4.0-8.0	30	1.5	N/A	AV085-30-ITI
7.9-12.7	30	1.5	N/A	AV086-30-ITI
11.7-18.0	30	1.5	N/A	AV087-30-ITI

MULTIBAND MODELS				
Freq. (GHz)	Atten. Range (dB)	VSWR Max	Flatness (+/- dB)	Model No.
1.0-4.0	20	1.5	N/A	AV083E-20-ITI
1.0-8.0	30	1.8	N/A	AV083F-30-ITI
2.0-18.0	10	1.5	N/A	AV084H-10-ITI
4.0-18.0	20	1.5	N/A	AV085H-20-ITI
6.0-18.0	60	1.5	N/A	AV086H-60-ITI

General Specifications

RF Power: 5W average, 3kW peak

RF Connectors: SMA F

INSERTION LOSS: 0.5dB max

VSWR: 1.5:1 max, on most models

Environmental

Temp: -55°C to +110°C

Shock: 15 G's, 11ms, 1/2 sine

Vibration: 3G overall

Altitude: 40,000ft. Survival 25,000ft Operating

Attenuator Drive Options:

Standard: Screw Driver Shaft with Lock Nut

The Part Number begins with AV0 or AF0

Knob Control Option:

Change AV0 or AF0 to AV9 or AF9

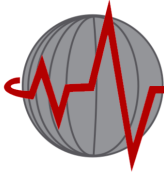
Turns Counting Dial Option:

Change AV0 or AF0 to AV8 or AF8

1989 Union Blvd., Bay Shore, NY 11706 Phone: 631-968-4116 Fax: 631-968-8339

Email: sales@impulse-tech.com Website: www.impulse-tech.com

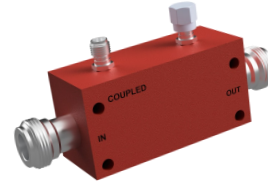
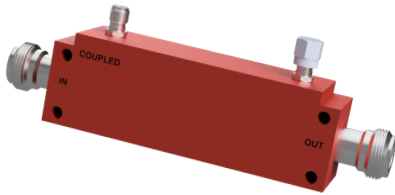
HIGH POWER COUPLERS



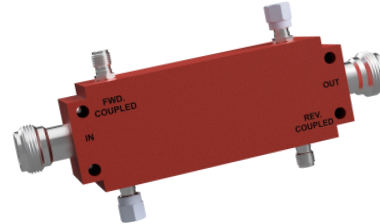
IMPULSE
TECHNOLOGIES INC.

600W High Power Directional Coupler

Impulse Technologies manufactures High Power Directional Couplers and Dual Directional Couplers. These couplers feature TypeN Female input and output connectors and are able to handle 600W of power. The coupling ports feature SMA Female connectors.



600W High Power Directional Coupler							
Part Number	Freq. (GHz)	Coup. (dB) +/-0.5	Freq. Sensitivity	Directivity (dB) min)	Ins. Loss (dB)	VSWR (Max) Main	VSWR (Max) Sec.
CCHP2211020-xx-ITI	1.0-2.0	30, 40 or 50	+/-0.8	23	0.20	1.20:1	1.30:1
CCHP2212040-xx-ITI	2.0-4.0	30, 40 or 50	+/-0.8	23	0.20	1.25:1	1.30:1
CCHP2211040-xx-ITI	1.0-4.0	30, 40 or 50	+/-0.8	22	0.20	1.20:1	1.30:1
CCHP2214080-xx-ITI	4.0-8.0	30, 40 or 50	+/-0.8	17	0.20	1.25:1	1.35:1
CCHP2212080-xx-ITI	2.0-8.0	30, 40 or 50	+/-1.0	17	0.20	1.25:1	1.35:1
CCHP2210842-xx-ITI	0.8-4.2	30, 40 or 50	+/-1.3	20	0.20	1.20:1	1.30:1



600W High Power Dual Directional Coupler								
Part Number	Freq. (GHz)	Coup. FWD +/-0.5 (dB)	Coup. REV +/-0.5 (dB)	Freq. Sensitivity	Directivity (dB) min)	Ins. Loss (dB)	VSWR (Max) Main	VSWR (Max) Sec.
CCHP2211020-xxF-xxR-ITI	1.0-2.0	30, 40 or 50	30, 40 or 50	+/-1.0	23	0.20	1.20:1	1.30:1
CCHP2212040-xxF-xxR-ITI	2.0-4.0	30, 40 or 50	30, 40 or 50	+/-1.0	23	0.20	1.25:1	1.30:1
CCHP2211040-xxF-xxR-ITI	1.0-4.0	30, 40 or 50	30, 40 or 50	+/-1.0	22	0.20	1.20:1	1.30:1
CCHP2214080-xxF-xxR-ITI	4.0-8.0	30, 40 or 50	30, 40 or 50	+/-1.0	21	0.20	1.25:1	1.30:1
CCHP2212080-xxF-xxR-ITI	2.0-8.0	30, 40 or 50	30, 40 or 50	+/-1.0	19	0.20	1.25:1	1.30:1
CCHP2210842-xxF-xxR-ITI	0.8-4.2	30, 40 or 50	30, 40 or 50	+/-1.3	20	0.20	1.20:1	1.30:1

General Specifications:

RF Power: 600W average, 10kW peak

Connectors: Stainless Steel

RF Connectors:

Body: Aluminum

Main: Type N F

Finish: Red Paint

Sec.: SMA F

Impulse Technologies products meet or exceed the requirements of Mil-E-5400 and MIL-E-16400.

1989 Union Blvd., Bay Shore, NY 11706 Phone: 631-968-4116 Fax: 631-968-8339

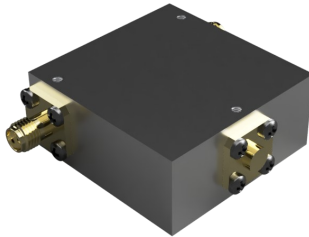
Email: sales@impulse-tech.com Website: www.impulse-tech.com

COAXIAL ISOLATORS AND CIRCULATORS

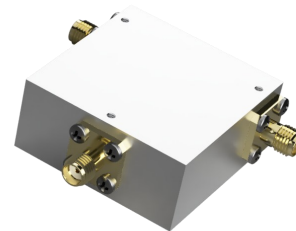


Isolators & Circulators

Isolators



Circulators



WIDE BAND MODELS - ISOLATORS & CIRCULATORS										
Frequency (GHz)	ISO (dB)		IL (dB)		VSWR		Fwd. Power (Watts)*		Model No.	
	Typ	Min	Typ	Max	Typ	Max	Avg.	Pk.	Circulator	Isolator
2.0 - 8.0		9		1.75		2.1	20	30	ITc2-8	ITi2-8
6.0 - 18.0	15	14	0.9	1	1.45	1.5	10	20	ITc6-18	ITi6-18
8.0 - 18.0	17	16	0.7	0.8	1.4	1.45	10	30	ITc8-18	ITi8-18
18.0 - 26.5	20	18	0.7	0.8	1.35	1.4	10	30	ITc18-26.5	ITi18-26.5
26.5 - 40.0	15	14	0.8	1	1.45	1.5	5	30	ITc26.5-40	ITi26.5-40

OCTAVE BAND MODELS - ISOLATORS & CIRCULATORS										
Frequency (GHz)	ISO (dB)		IL (dB)		VSWR		Fwd. Power (Watts)*		Model No.	
	Typ	Min	Typ	Max	Typ	Max	Avg.	Peak	Circulator	Isolator
1.0 - 2.0	20	18	0.35	0.5	1.25	1.3	50	75	ITc1-2	ITi1-2
2.0 - 4.0	20	18	0.4	0.5	1.25	1.3	20	30	ITc2-4	ITi2-4
2.6 - 5.2	20	18	0.4	0.6	1.25	1.3	20	30	ITc2.6-5.2	ITi2.6-5.2
3.0 - 6.0	20	18	0.35	0.4	1.25	1.3	20	30	ITc3-6	ITi3-6
4.0 - 8.0	22	20	0.35	0.4	1.18	1.25	20	30	ITc4-8	ITi4-8
5.0 - 10.7	16	15	0.9	1	1.4	1.45	20	20	ITc5-10	ITi5-10
6.0 - 12.4	19	17	0.5	0.6	1.3	1.35	20	30	ITc6-12	ITi6-12
8.0 - 12.4	22	20	0.35	0.5	1.18	1.25	25	50	ITc8-12.4	ITi8-12.4
12.0 - 18.0	22	20	0.45	0.5	1.18	1.25	5	30	ITc12-18	ITi12-18

General Specifications:

RF Power:

Isolators: 10-20W average, 20-30W peak, 2W reflective

Circulators: 10-20W avg., 20-30W peak

RF Connectors: SMA F, others available

2.92mm (above 26.5GHz)

Body Finish: Nickel Plating

Operational Temperature: 0°C to +50°C

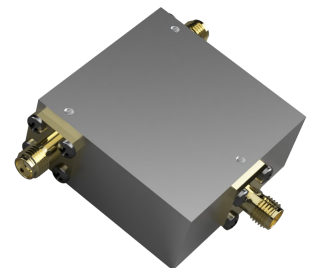
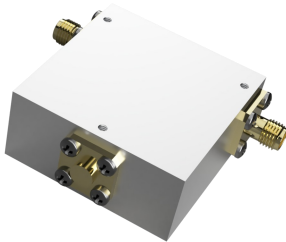
Our isolators and circulators are with the smallest package size that is available.

Listed models are a small selection of available models. Other frequency ranges and connectors are available upon request.

Impulse Technologies products meet or exceed the requirements of Mil-E-5400 and MIL-E-16400.

1989 Union Blvd., Bay Shore, NY 11706 Phone: 631-968-4116 Fax: 631-968-8339

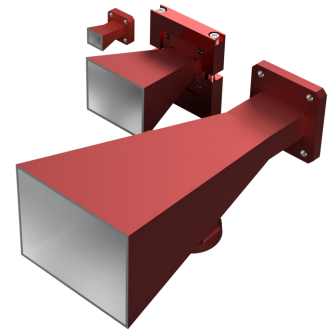
Email: sales@impulse-tech.com Website: www.impulse-tech.com



STANDARD GAIN HORNS



Standard Gain Horn Antennas



Impulse Technologies manufactures a high quality line of Standard Gain Horn Antenna that are linearly polarized, lightweight and corrosion resistant.

Impulse's horns are based on typical specifications for standard pyramidal horn antenna. The *horn antenna* models offered are the most common gain values available, typically 10dB, 15dB, & 20dB.

The horn antennas are stocked with flat flanges (either CPRF or Cover), other flanges are available upon request.

All of Impulse's Standard Gain Horn Antennas are RoHS and REACH compliant. They are chemfilm coated and painted in a distinctive red paint.

All antennas WR137 to WR28 include provisions for mounting to a tripod with a ¼ - 20 mounting screw.

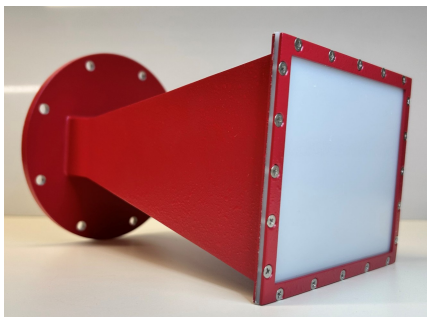
Other WG sizes and Gain values are available upon request. For radome covers please contact the office.

Typical Gain Variation:

+/-1.5 to +/-2.0dB

RF Power:

Max Power is equal to the max power of the input WG size.



WG Size	Frequency (GHz)	Model No.	Gain (dB)	3dB Beam Width		
				E-Plane	H-Plane	
WR650	1.12-1.70	SGH650-10-ITI	10	65.1°	45.6°	NEW >
WR650	1.12-1.70	SGH650-15-ITI	15	31.1°	29.0°	NEW >
WR650	1.12-1.70	SGH650-20-ITI	20	52.4°	52.4°	NEW >
WR430	1.70-2.60	SGH430-10-ITI	10	64.8°	45.4°	NEW >
WR430	1.70-2.60	SGH430-15-ITI	15	33.1°	32.0°	NEW >
WR430	1.70-2.60	SGH430-20-ITI	20	17.3°	17.4°	NEW >
WR340	2.20-3.30	SGH340-10-ITI	10	60.0°	49.3°	NEW >
WR340	2.20-3.30	SGH340-15-ITI	15	32.2°	30.8°	NEW >
WR340	2.20-3.30	SGH340-20-ITI	20	18.5°	16.3°	NEW >
WR284	2.60-3.95	SGH284-10-ITI	10	50.8°	54.1°	NEW >
WR284	2.60-3.95	SGH284-15-ITI	15	31.0°	30.6°	NEW >
WR284	2.60-3.95	SGH284-20-ITI	20	17.2°	16.5°	NEW >
WR229	3.30-4.90	SGH229-10-ITI	10	58.6°	51.9°	NEW >
WR229	3.30-4.90	SGH229-15-ITI	15	32.7°	32.4°	NEW >
WR229	3.30-4.90	SGH229-20-ITI	20	17.1°	16.7°	NEW >
WR187	3.95-5.85	SGH187-10-ITI	10	55.0°	54.1°	NEW >
WR187	3.95-5.85	SGH187-15-ITI	15	33.8°	33.3°	NEW >
WR187	3.95-5.85	SGH187-20-ITI	20	18.9°	19.2°	NEW >
WR159	4.90-7.05	SGH159-10-ITI	10	59.8°	48.3°	NEW >
WR159	4.90-7.05	SGH159-15-ITI	15	31.3°	30.8°	NEW >
WR159	4.90-7.05	SGH159-20-ITI	20	14.3°	16.9°	NEW >
WR137	5.85 - 8.20	SGH137-10-ITI	10	55.1°	54.2°	
WR137	5.85 - 8.20	SGH137-15-ITI	15	33.7°	33.2°	
WR137	5.85 - 8.20	SGH137-20-ITI	20	18.7°	18.8°	
WR112	7.05 - 10.0	SGH112-10-ITI	10	56.8°	55.2°	
WR112	7.05 - 10.0	SGH112-15-ITI	15	32.4°	32.0°	
WR112	7.05 - 10.0	SGH112-20-ITI	20	19.3°	19.3°	
WR90	8.20 - 12.4	SGH90-10-ITI	10	48.5°	47.4°	
WR90	8.20 - 12.4	SGH90-15-ITI	15	29.3°	29.0°	
WR90	8.20 - 12.4	SGH90-20-ITI	20	16.1°	16.5°	
WR75	10.0 - 15.0	SGH75-10-ITI	10	50.2°	49.2°	
WR75	10.0 - 15.0	SGH75-15-ITI	15	35.4°	28.5°	
WR75	10.0 - 15.0	SGH75-20-ITI	20	16.3°	17.2°	
WR62	12.4 - 18.0	SGH62-10-ITI	10	55.3°	50.9°	
WR62	12.4 - 18.0	SGH62-15-ITI	15	30.1°	31.2°	
WR62	12.4 - 18.0	SGH62-20-ITI	20	18.8°	18.9°	
WR51	15.0 - 22.0	SGH51-10-ITI	10	55.1°	54.2°	
WR51	15.0 - 22.0	SGH51-15-ITI	15	32.0°	31.8°	
WR51	15.0 - 22.0	SGH51-20-ITI	20	16.9°	18.0°	
WR42	18.0 - 26.5	SGH42-10-ITI	10	58.0°	57.0°	
WR42	18.0 - 26.5	SGH42-15-ITI	15	31.3°	31.5°	
WR42	18.0 - 26.5	SGH42-20-ITI	20	17.5°	17.8°	
WR34	22.0 - 33.0	SGH34-10-ITI	10	54.1°	53.2°	
WR34	22.0 - 33.0	SGH34-15-ITI	15	23.1°	40.8°	
WR34	22.0 - 33.0	SGH34-20-ITI	20	17.0°	17.4°	
WR28	26.5 - 40.0	SGH28-10-ITI	10	54.2°	54.4°	
WR28	26.5 - 40.0	SGH28-15-ITI	15	32.1°	31.3°	
WR28	26.5 - 40.0	SGH28-20-ITI	20	16.7°	18.3°	

Standard Gain Horn Antennas are also available with a waveguide to coax adapter attached to it. Standard connector configurations include SMA F, TypeN F and 2.92mm F (K-type F).

Impulse Technologies products meet or exceed the requirements of Mil-E-5400 and MIL-E-16400.

1989 Union Blvd., Bay Shore, NY 11706 Phone: 631-968-4116 Fax: 631-968-8339

Email: sales@impulse-tech.com Website: www.impulse-tech.com

WG-COAX ADAPTERS

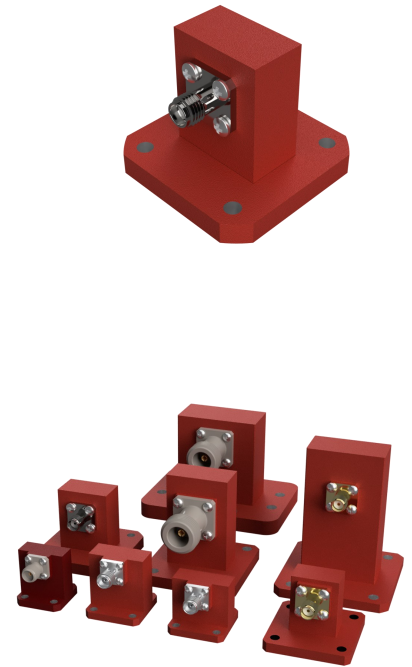


WG-Coax Adapters

Impulse Technologies manufactures Right Angle Waveguide to Coax Adapters covering the full frequency range for WR28 to WR650 rectangular waveguides. Standard models are available with CPRF and Cover flanges.

Configurations with TypeN, SMA and 2.92mm connectors are available depending on WG size.

WAVEGUIDE-COAX ADAPTERS								
Model Number	Waveguide Size	Freq. (GHz)	Insertion Loss (dB)	VSWR Max	Flange	Connector	CW Power (W)	Peak Power (kW)
WGC650A-F2-C3-ITI	WR650	1.12-1.70	0.1	1.25	CPRF	TypeN F	200	3
WGC650A-F2-C1-ITI	WR650	1.12-1.70	0.12	1.25	CPRF	SMA F	50	3
WGC430A-F2-C3-ITI	WR430	1.70-2.60	0.12	1.25	CPRF	TYPEN F	200	3
WGC430A-F2-C1-ITI	WR430	1.70-2.60	0.13	1.25	CPRF	SMA F	50	3
WGC340A-F2-C3-ITI	WR340	2.20-3.30	0.12	1.25	CPRF	TYPEN F	200	3
WGC340A-F2-C1-ITI	WR340	2.20-3.30	0.12	1.25	CPRF	SMA F	50	3
WGC284A-F6-C3-ITI	WR284	2.60-3.95	0.13	1.25	COVER	TypeN F	200	3
WGC284A-F6-C1-ITI	WR284	2.60-3.95	0.15	1.25	COVER	SMA F	50	3
WGC229A-F2-C3-ITI	WR229	3.30-4.90	0.18	1.25	CPRF	TYPEN F	200	3
WGC229A-F2-C1-ITI	WR229	3.30-4.90	0.18	1.25	CPRF	SMA F	50	3
WGC187A-F6-C3-ITI	WR187	3.95-5.85	0.17	1.25	COVER	TYPEN F	200	3
WGC187A-F6-C1-ITI	WR187	3.95-5.85	0.17	1.25	COVER	SMA F	50	3
WGC159A-F2-C3-ITI	WR159	4.90-7.05	0.18	1.25	CPRF	TYPEN F	200	3
WGC159A-F2-C1-ITI	WR159	4.90-7.05	0.18	1.25	CPRF	SMA F	50	3
WGC137A-F2-C3-ITI	WR137	5.85-8.20	0.15	1.15	CPRF	TypeN F	100	3
WGC137A-F2-C1-ITI	WR137	5.85-8.20	0.15	1.15	CPRF	SMA F	100	3
WGC112A-F6-C3-ITI	WR112	7.05-10.0	0.2	1.15	COVER	TYPEN F	50	3
WGC112A-F6-C1-ITI	WR112	7.05-10.0	0.2	1.15	COVER	SMA F	50	3
WGC90A-F6-C3-ITI	WR90	8.20-12.4	0.2	1.15	COVER	TYPEN F	50	1
WGC90A-F6-C1-ITI	WR90	8.20-12.4	0.2	1.15	COVER	SMA F	50	1
WGC75A-F6-C1-ITI	WR75	10.0-15.0	0.2	1.15	COVER	SMA F	50	1
WGC62A-F6-C1-ITI	WR62	12.4-18.0	0.2	1.15	COVER	SMA F	50	1
WGC51A-F6-C1-ITI	WR51	15.0-22.0	0.25	1.2	COVER	SMA F	50	1
WGC42A-F6-C5-ITI	WR42	18.0-26.5	0.25	1.2	COVER	2.92MM F	50	1
WGC34A-F6-C5-ITI	WR34	22.0-33.0	0.25	1.2	COVER	2.92MM F	50	1
WGC28A-F6-C5-ITI	WR28	26.5-40.0	0.25	1.25	COVER	2.92MM F	50	1



General Specifications:

RF Power: 100W average, 3kW peak (WR137)

50W average, 1kW peak (except WR34, WR28)

RF Connectors: 2.92mm F, SMA F, Type N F

Connectors: Stainless Steel

Flange: CPRF (WR137), COVER

Body: Aluminum

Applicable Mil-Specs: MIL-DTL-22641 including temperature -55°C to +125°C

All of Impulse's WG-Coax Adapters are generally available from stock for immediate shipment.

Impulse Technologies products meet or exceed the requirements of Mil-E-5400 and MIL-E-16400.

1989 Union Blvd., Bay Shore, NY 11706 Phone: 631-968-4116 Fax: 631-968-8339

Email: sales@impulse-tech.com Website: www.impulse-tech.com

WG PRECISION TERMINATION



WG Precision Terminations

Impulse Technologies manufactures Low Power Precision Terminations covering the full frequency range for WR28 to WR137 rectangular waveguides. Standard models are available with CPRF (WR137) and Cover flanges.

Terminations feature precision cone load elements providing a very low VSWR of 1.02:1 max.



WAVEGUIDE PRECISION TERMINATION						
Model Number	Waveguide Size	Freq. (GHz)	POWER (W)	PEAK POWER	VSWR Max	Length
WGPT137A-F2-ITI	WR137	5.85-8.20	6	—	1.02	5.5
WGPT112A-F6-ITI	WR112	7.05-10.0	4	—	1.02	5.0
WGPT90A-F6-ITI	WR90	8.20-12.4	4	—	1.02	4.0
WGPT75A-F6-ITI	WR75	10.0-15.0	2	—	1.02	4.0
WGPT62A-F6-ITI	WR62	12.4-18.0	1.5	—	1.02	4.0
WGPT51A-F6-ITI	WR51	15.0-22.0	1.0	—	1.02	4.0
WGPT42A-F6-ITI	WR42	18.0-26.5	0.5	—	1.02	2.5
WGPT34A-F6-ITI	WR34	22.0-33.0	0.5	—	1.02	2.5
WGPT28A-F6-ITI	WR28	26.5-40.0	0.5	—	1.02	2.0

General Specifications:

RF Power: 0.5W—6W average

Flange: CPRF (WR137), COVER (WR28-WR112)

Body: Aluminum

Finish: Paint, Red

All of Impulse's Terminations are generally available from stock for immediate shipment.

Impulse Technologies products meet or exceed the requirements of Mil-E-5400 and MIL-E-16400.

1989 Union Blvd., Bay Shore, NY 11706 Phone: 631-968-4116 Fax: 631-968-8339

Email: sales@impulse-tech.com Website: www.impulse-tech.com

WG Product Lines

Standard WG Product Lines



WG Standard Assemblies

Impulse Technologies offers several WG product lines including:

WG Bulkhead Assemblies

WG Dehydrators

WG Flange Spacers

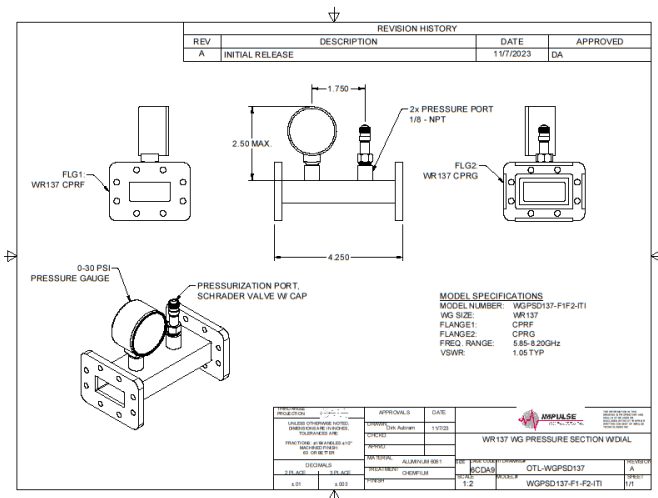
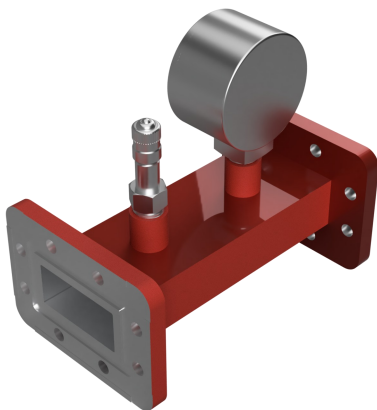
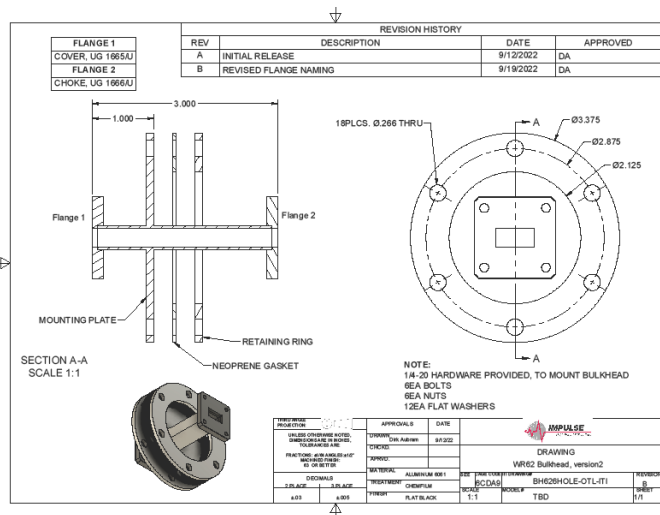
WG Pressure Sections

At this time we are working on standardized sizes and datasheets.

WG Gaskets

WG Bend Assemblies

WG Cast Miter Assemblies

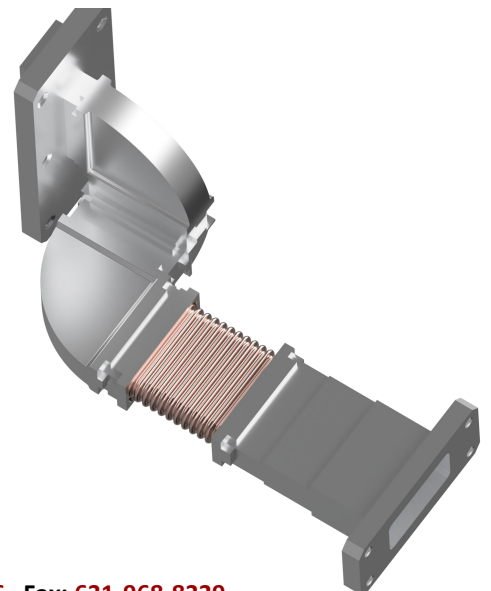
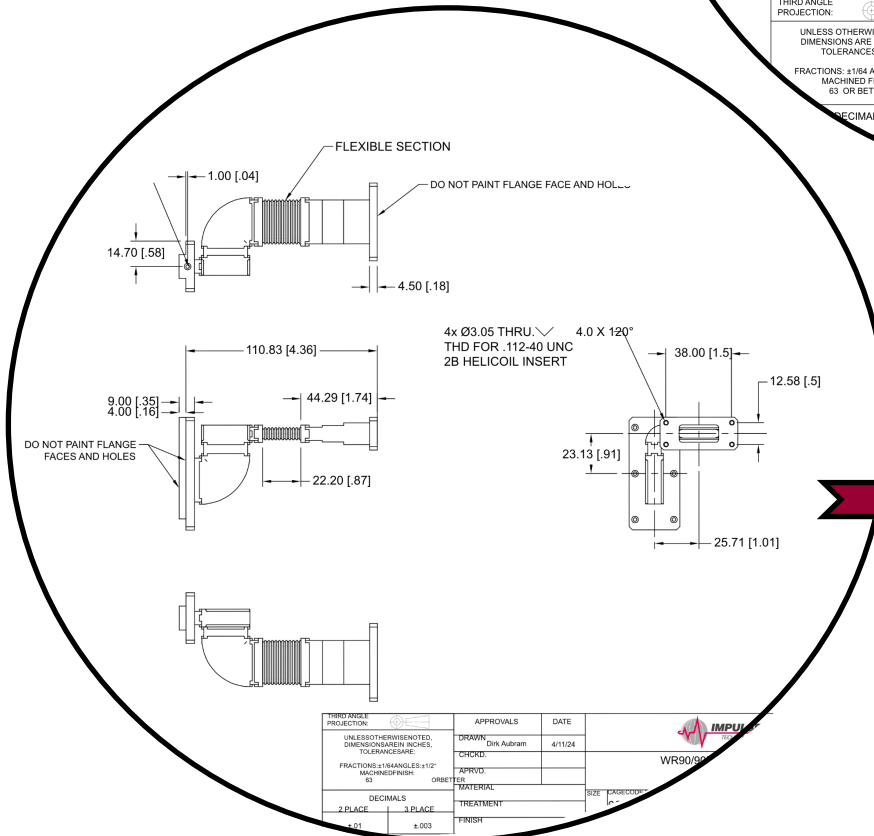
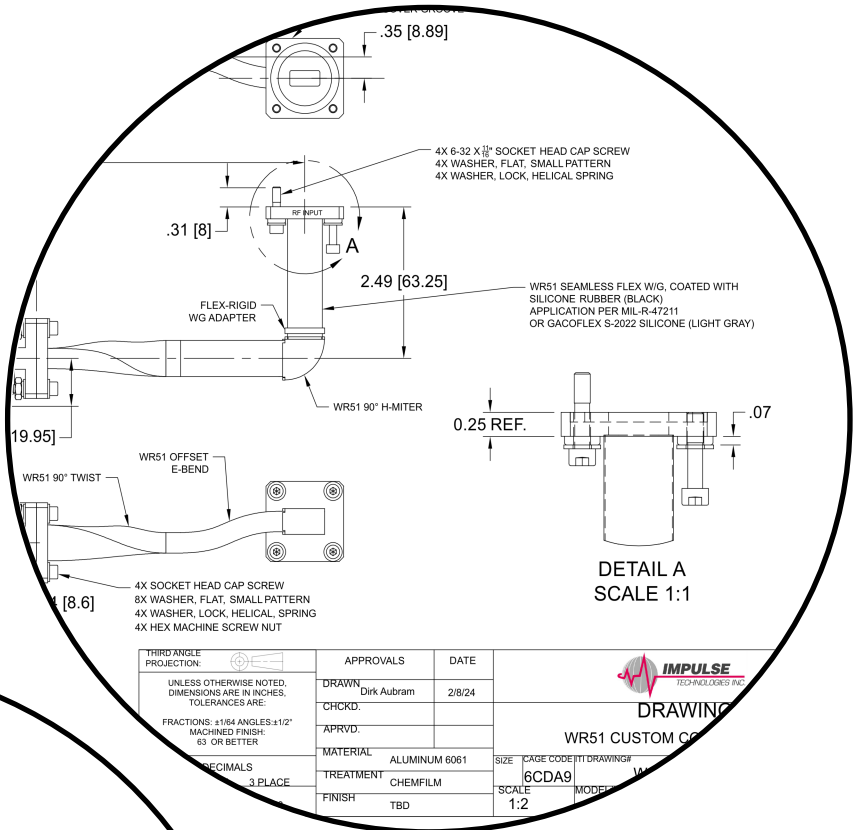
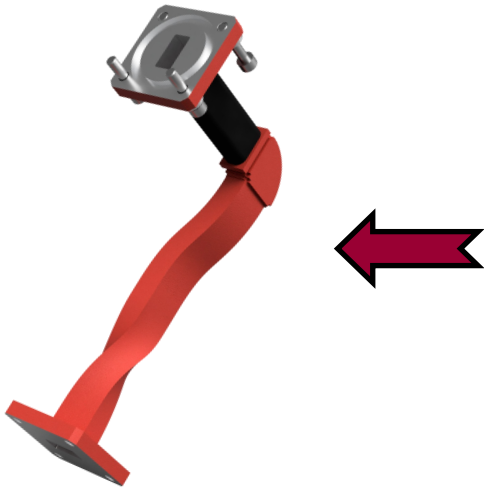


WG Custom Assemblies



WG Custom Assemblies

Impulse Technologies designs and manufactures custom WG assemblies. These WG assemblies can be made to customer provided drawings or be designed in-house to the customer provided specifications.



1989 Union Blvd., Bay Shore, NY 11706 Phone: 631-968-4116 Fax: 631-968-8339

Email: sales@impulse-tech.com Website: www.impulse-tech.com



IMPULSE

TECHNOLOGIES INC.

AN INTERNATIONAL COMPANY

About Us

Impulse Technologies proudly designs & manufactures RF Passive Components in the United States and partners with manufacturers across the globe to deliver unparalleled quality & performance. We are focused on solving your most difficult challenges by offering custom solutions through our large product and service offerings, procurement options and logistical planning.

Visit our website at impulse-tech.com to view our rapidly growing catalogue or product offerings.

We are looking for domestic and international representatives.

1989 Union Blvd., Bay Shore, NY 11706 Phone: **631-968-4116** Fax: **631-968-8339**

Email: sales@impulse-tech.com Website: www.impulse-tech.com